

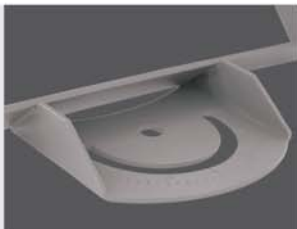


FL | FX
floodlight | fixture

S3319
symmetrical

NIKKON®

- 1 reflector
- 2 body
- 3 mounting bracket
- 4 heat resistant tempered glass
- 5 termination box
- 6 stainless steel handle
- 7 cable gland
- 8 aiming angle plate
- 9 side entry cover
- 10 filter
- 11 remote control gear



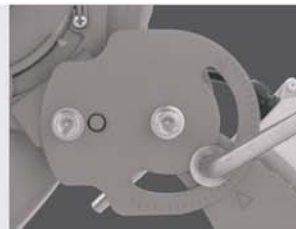
traverse angle 180°

the mounting bracket provides 180 degree traverse angle index to set aiming direction.



filter

charcoal filter allows the optical chamber to breathe and protect fixture from dust to reduce the cleaning maintenance cycle.



aiming angle index plate

with angle indication mechanism, no aiming marking is required during relamping and installation.



lamp access

with side entry lamp access, the aiming of the fixture is unaltered during relamping and reorientation is unnecessary.

features

high performance reflector

single piece high purity deep draw aluminium reflector is sealed with silicon gasket over heat resistant tempered glass provide a watertight seal.

mounting bracket

heavy duty mounting bracket is made by galvanised steel and finished with AKzo Nobel Interpon outdoor epoxy powder coating.

IP66 ingress protection

the IP66 rating prevent the ingress of moisture and dust to provide the optimum performance throughout product life.

termination box

thermoplastic fully sealed termination box, incorporating an independent electronic ignitor, 3 pole terminal block and IP68 PG13.5 cable gland in polyamide material.

handle

heavy duty and corrosion resistance stainless steel handle for harsh environments.

control gear

external IP65 die-cast aluminium remote control gear.

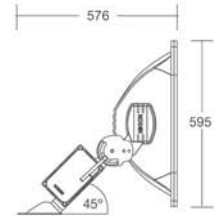
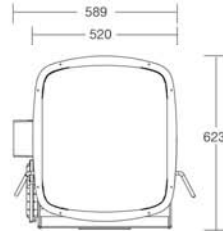
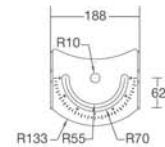
compliance and approval

IEC60598-1: 2003 & IEC60598-2-5 : 2006

applications

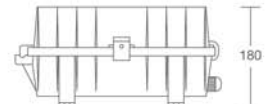
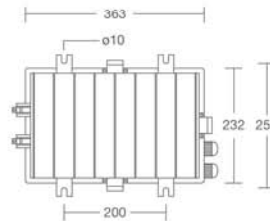
- billboards
- stadiums
- facade lightings
- carpark
- sports centres

dimensions

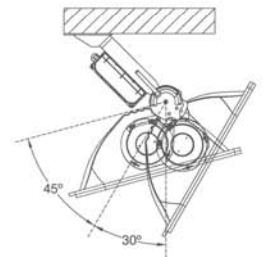
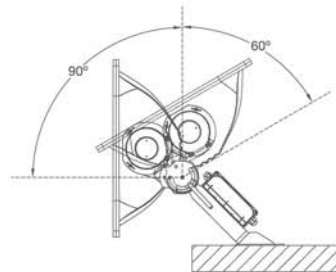


accessories

S5100-UA

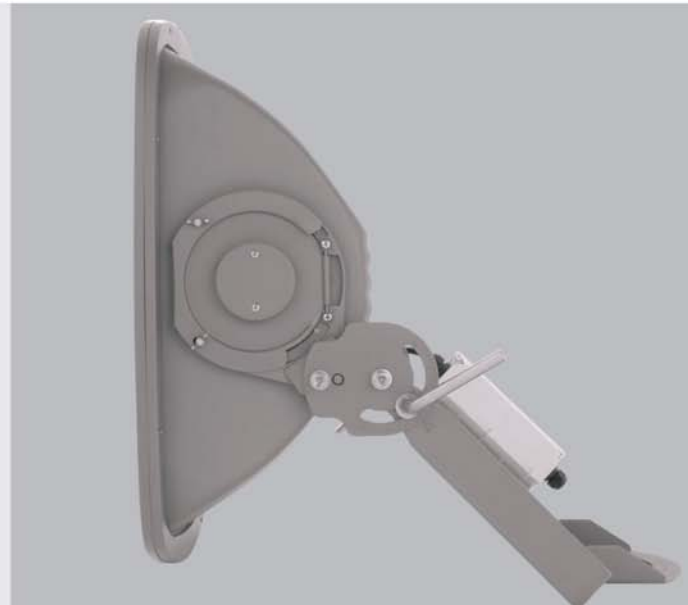


tilting angle instruction

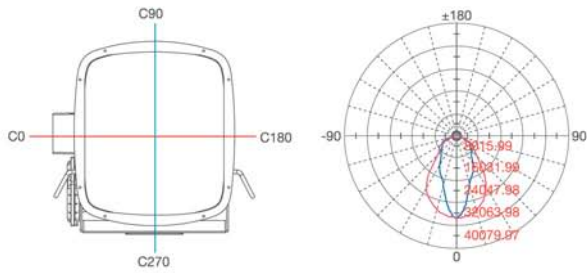


description

the S3319 floodlight is an exceptional quality, efficiency and affordability. A multitude of integrated features contribute to improved illumination, longevity and ease of maintenance and installation. The fixture covers a wide range of lamp options from MH1000w and HPS1000w. The symmetrical medium beam of the S3319 allows for various applications from the one fixture. Common applications include signage, security, carpark, industrial floodlighting and open area lighting.

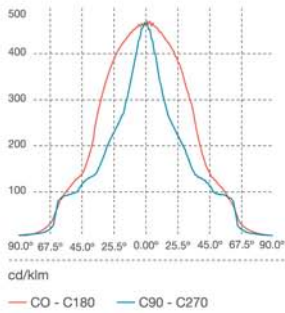


photometric

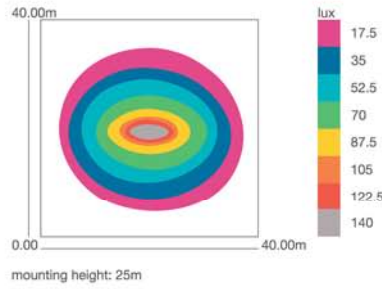


note : photometric result tested based on 85000lm MT 1000A - BH / 67 clear tube

intensity diagram



false colour rendering



order code

model	lamp type	lamp holder	order code
S3319 MH 1000W	tubular	E40	S3319-M1000
S3319 HPS 1000W	tubular	E40	S3319-S1000
accessories	housing material	IP rated	order code
remote control gear (MH 1000W)	die-cast aluminium	IP65	S5100 UA-M1000
remote control gear (HPS 1000W)	die-cast aluminium	IP65	S5100 UA-S1000

note : specification is subject to change without prior notice

Success Electronics & Transformer Manufacturer Sdn Bhd (200853-k)

A wholly owned subsidiary of Success Transformer Corporation Berhad.

No. 3, 5 & 7 Jalan TSB 8, Taman Industri Sungai Buloh, 47000 Sungai Buloh, Selangor Darul Ehsan, West Malaysia.

Tel : +603-6157 2788/ 2785/ 2787 Fax : +603-6157 2722/ 2723 Email : ses@success.com.my Website : www.success.com.my